

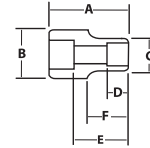


3/8" DRIVE SHALLOW IMPACT SOCKETS, 6 POINT, SAE

Black Industrial Finish

Product Code	Size (Inches)	A (Inches)	B (Inches)	C (Inches)	D (Inches)	E (Inches)	F (Inches)
2-608	1/4	1 1/32	1 1/16	1/2	7/32	9/16	17/32
2-610	5/16	1 1/32	1 1/16	1/2	1/4	9/16	17/32
2-612	3/8	1 1/32	1 1/16	5/8	9/32	9/16	17/32
2-614	7/16	1 1/16	1 1/16	2 1/32	9/32	19/32	11/32
2-616	1/2	1 1/16	3/4	3/4	5/16	19/32	3/8
2-618	9/16	1 3/32	13/16	13/16	9/16	19/32	17/32
2-620	5/8	1 1/8	29/32	29/32	19/32	5/8	-
2-622	11/16	1 5/32	31/32	31/32	19/32	5/8	21/32
2-624	3/4	1 3/16	1 1/16	1 1/16	21/32	11/16	23/32
2-626	13/16	1 1/4	1 1/8	1 1/8	11/16	23/32	25/32
2-628	7/8	1 9/32	1 3/16	1 3/16	3/4	3/4	27/32
2-630	15/16	1 5/16	1 9/32	1 9/32	29/32	13/16	29/32
2-632	1	1 5/16	1 11/32	1 11/32	25/32	25/32	31/32

Fed. Spec: ANSI B107.2



TOOLS @ HEIGHT
DROP PREVENTION SYSTEM

Side hole in socket permits use with Snap-on Industrial Brands Tools@Height drive tools such as ratchets, extensions and u-joints

WS-2-8 8 Piece 3/8" Drive Shallow 6 Point Impact Socket Set on Clip Rail

Contents Include:

Product Code	Size (Inches)	Product Code	Size (Inches)
2-610	5/16	2-618	9/16
2-612	3/8	2-620	5/8
2-614	7/16	2-622	11/16
2-616	1/2	2-624	3/4



WS-2-13 13 Piece 3/8" Drive Shallow 6 Point Impact Socket Set on Clip Rail

Contents Include:

Product Code	Size (Inches)	Product Code	Size (Inches)	Product Code	Size (Inches)
2-608	1/4	2-618	9/16	2-628	7/8
2-610	5/16	2-620	5/8	2-630	15/16
2-612	3/8	2-622	11/16	2-632	1
2-614	7/16	2-624	3/4		
2-616	1/2	2-626	13/16		



Features

- SUPERTORQUE® lobular openings for greater turning power without deforming the fastener.
- Designed for maximum engagement on 6 point fasteners.
- Suitable for use with pneumatic and electric impact wrenches.
- Specially heat treated for impact use to provide long life, safety, and durability.



3/8" DRIVE UNIVERSAL IMPACT SOCKETS, 6 POINT, SAE

Black Industrial Finish

Product Code	Size (Inches)	A (Inches)	B (Inches)	C (Inches)	D (Inches)	E (Inches)	F (Inches)
36212	3/8	2 1/4	1	1 9/16	9/16	9/16	15/16
36214	7/16	2 1/4	1	1 11/16	9/16	9/16	15/16
36216	1/2	2 1/2	1	1 3/4	9/16	9/16	1 1/16
36218	9/16	2 1/2	1	1 3/4	9/16	9/16	1 1/16
36220	5/8	2 1/2	1	1 3/4	9/16	9/16	1 1/16
36222	1 1/16	2 5/8	1	1	9/16	1 1/16	1 1/16
36224	3/4	2 5/8	1	1 3/16	9/16	1 1/16	1 1/16

Fed. Spec: ANSI B107.2



36224

TOOLS @ HEIGHT
DROP PREVENTION SYSTEM

Side hole in socket permits use with Snap-on Industrial Brands Tools@Height drive tools such as ratchets, extensions and u-joints

36912 7 Piece 3/8" Drive Universal 6 Point Impact Socket Set on Clip Rail

Contents Include:

Product Code	Size (Inches)	Product Code	Size (Inches)
36212	3/8	36220	5/8
36214	7/16	36222	11/16
36216	1/2	36224	3/4
36218	9/16		



36912

Features

- SUPERTORQUE® lobular openings for greater turning power without deforming the fastener
- Designed for maximum engagement on 6 point fasteners
- Suitable for use with pneumatic and electric impact wrenches
- Specially heat treated for impact use to provide long life, safety, and durability
- Drive end features pin retention hole and groove

3/8" DRIVE

SOCKETS AND DRIVE TOOLS

