

## STANLEY® FATMAX® PUSH-LOCK™ ADJUSTABLE JOINT PLIERS



- Slip-resistant Bi-Material handle for a comfortable grip.
- Multipurpose jaws designed to grasp flat and round objects.
- Push-Lock™ technology allows for quick and easy adjustment in 17 positions.
- Induction hardened jaws last longer and grip better than non-induction hardened jaws.



Product #	Length	Number of Positions	Jaw Capacity
84-647	8-1/4 in (210 mm)	17	1-2/5 in (36 mm)
84-648	10-5/16 in (262 mm)	17	2-3/8 in (60 mm)
84-649	12 in (305 mm)	17	2-3/4 in (70 mm)

## 3 PIECE STANLEY® FATMAX® PUSHLOCK™ ADJUSTABLE JOINT PLIERS SET



Product #: 84-554

- Slip-resistant Bi-Material handle for a comfortable grip.
- Multipurpose jaws designed to grasp flat and round objects.
- Push-Lock™ technology allows for quick and easy adjustment in 17 positions.
- Induction hardened jaws last longer and grip better than non-induction hardened jaws.



Contents	Description
84-647	(1) 8-1/4 in (210 mm)
84-648	(1) 10-5/16 in (262 mm)
84-649	(1) 12 in (305 mm)

## STANLEY® FATMAX® GROOVE JOINT PLIERS



- Slip-resistant tongue and groove pliers used for grasping and turning.
- Induction hardened jaws last longer and grip better than non-induction hardened jaws.
- One-piece rivet design improves strength and eliminates retightening.
- Drop-forged chrome vanadium steel is strong and durable.
- Meets ANSI specifications.



Product #	Length	Number of Positions	Jaw Capacity	Jaw Shape
84-522	8 in (203 mm)	6	1-1/4 in (32 mm)	Curved Jaw
84-507	12-7/8 in (326 mm)	8	2-3/16 in (56 mm)	Curved Jaw
84-493	16-9/32 in (420 mm)	9	4-3/8 in (111 mm)	Curved Jaw



### 3 PIECE STANLEY® FATMAX® CUTTING PLIERS SET



Product #: 84-538

- Precision machined jaws ideal for gripping, twisting and cutting.
- Forged high quality carbon steel provides a durable gripping and cutting edge.
- Induction hardened jaws last longer than non-induction hardened jaws and grip better.
- Meets ANSI specifications.



Pieces	Description
3	(1) 8 in (203 mm) Combination Pliers (1) 8 in (203 mm) Angled Diagonal Pliers (1) 8 in (203 mm) Long Nose Pliers

### 2 PIECE STANLEY® FATMAX® GROOVE JOINT PLIERS SET



Product #: 84-529

- Slip-resistant tongue and groove pliers used for grasping and turning.
- Induction hardened jaws last longer and grip better than non-induction hardened jaws.
- One-piece rivet design improves strength and eliminates retightening.
- Drop-forged chrome vanadium steel is strong and durable.
- Meets ANSI specifications.



Pieces	Description
2	(1) 10-5/16 in (262 mm) (1) 12-5/8 in (320 mm)

### STANLEY® FATMAX® PUSH-LOCK™ SLIP-JOINT PLIERS



- Multipurpose jaws designed to grasp flat and round objects.
- Push-Lock™ technology allows for quick and easy adjustment in 3 positions.
- Induction hardened jaws last longer and grip better than non-induction hardened jaws.



Product #	Length	Number of Positions	Jaw Capacity
84-645	6-3/4 in (171 mm)	3	1/2 in (13 mm)
84-646	8-3/8 in (212 mm)	3	5/8 in (16 mm)

### STANLEY® FATMAX® SLIP-JOINT PLIERS



- Two-position, adjustable joint design used for grasping and turning.
- Induction hardened jaws last longer and grip better than non-induction hardened jaws.
- One-piece rivet design improves strength and eliminates retightening.
- Forged chrome vanadium steel is strong and durable.
- Meets ANSI specifications.



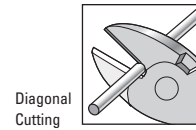
Product #	Length	Number of Positions	Jaw Capacity
84-524	8-3/8 in (212 mm)	2	1-1/2 in (38 mm)



## STANLEY® FATMAX® DIAGONAL CUTTING PLIERS

- Slim head design allows access into tight spaces.
- Induction hardened cutting jaws engineered to stay sharp longer than non-induction hardened jaws.
- Forged high-quality carbon steel provides a durable cutting edge.
- Meets ANSI specifications.

Product #	Length
89-858	6-3/8 in (163 mm)
89-859	7-1/2 in (191 mm)



STANLEY  
FatMax



## STANLEY® FATMAX® ANGLED DIAGONAL CUTTING PLIERS

- High-leverage pivot design uses less energy to cut than traditional cutting pliers.
- Induction hardened cutting jaws engineered to stay sharp longer than non-induction hardened jaws.
- Angled head design cuts flush against any surface.
- Forged high-quality carbon steel provides a durable cutting edge.
- Meets ANSI specifications.

Product #	Length
89-860	6-7/8 in (175 mm)
89-861	8 in (203 mm)
89-862	10 in (250 mm)

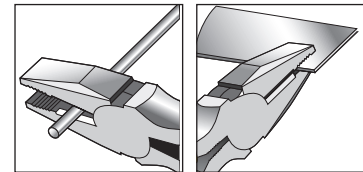


STANLEY  
FatMax

## STANLEY® FATMAX® LINEMAN CUTTING PLIERS

- High-leverage pivot design uses less energy to cut than traditional cutting pliers.
- Induction hardened cutting jaws engineered to stay sharp longer than non-induction hardened jaws.
- Precision machined jaws ideal for gripping, twisting and cutting.
- Forged high-quality carbon steel provides a durable gripping and cutting edge.
- Meets ANSI specifications.

Product #	Length
89-863	7-11/16 in (191 mm)
89-864	8-3/8 in (213 mm)
89-865	9-1/2 in (241 mm)



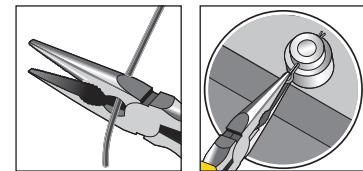
STANLEY  
FatMax



## STANLEY® FATMAX® LONG NOSE CUTTING PLIERS

- Precision machined jaws ideal for gripping, twisting and cutting.
- Slim head design allows access into tight spaces.
- Induction hardened cutting jaws engineered to stay sharp longer than non-induction hardened jaws.
- Forged high-quality carbon steel provides a durable gripping and cutting edge.
- Meets ANSI specifications.

Product #	Length
89-869	6-1/2 in (165 mm)
89-870	8-1/16 in (205 mm)



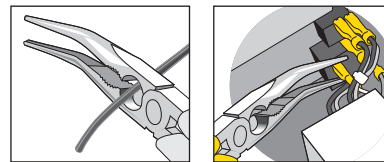
STANLEY  
FatMax



## STANLEY® FATMAX® BENT LONG NOSE CUTTING PLIERS



- Precision machined jaws ideal for bending, twisting and cutting.
- Induction hardened cutting jaws engineered to stay sharp longer than non-induction hardened jaws.
- Slim head design is angled to allow access into tight spaces.
- Forged high-quality carbon steel provides a durable cutting edge.
- Meets ANSI specifications.



Product #	Length
89-871	6-3/8 in (162 mm)
89-872	7-7/8 in (200 mm)



## STANLEY® FATMAX® CABLE CUTTER



- Curved jaw design cuts coaxial and other soft cables up to 1/2" in diameter.
- Induction hardened cutting jaws engineered to cut clean and stay sharp longer than non-induction hardened jaws.
- Drop-forged high-quality carbon steel provides a durable cutting edge.
- Meets ANSI specifications.

Product #	Length
89-874	8-9/16 in (213 mm)



## STANLEY® FATMAX® END CUTTING PLIERS



- Round head design is ideal for cutting wires and pulling nails.
- Induction hardened cutting jaws engineered to stay sharp longer than non-induction hardened jaws.
- Drop-forged high-quality carbon steel provides a durable cutting edge.
- Meets ANSI specifications.



Product #	Length	Jaw Length	Jaw Width	Jaw Thickness	Cutting Edge Length
89-875	6-1/2 in (165 mm)	25/64 in (10 mm)	1-11/32 in (34 mm)	7/8 in (22 mm)	7/8 in (22 mm)

## FEATURES & BENEFITS – STANLEY® BI-MATERIAL PLIERS

- Slip-resistant Bi-Material handle for a comfortable grip.
- Drop-forged steel is strong and durable.
- Meets ANSI specifications.



## STANLEY® BI-MATERIAL GROOVE JOINT PLIERS

- Slip-resistant tongue and groove design used for grasping and turning.

Product #	Length	Number of Positions
84-034	7-7/8 in (200 mm)	6
84-024	10-3/8 in (264 mm)	7



## 2 PIECE STANLEY® BI-MATERIAL GROOVE JOINT PLIERS SET

Product #: 84-503

- Slip-resistant tongue and groove design used for grasping and turning.

Contents	Description
84-024	(1) 10-3/8 in (264 mm)
84-034	(1) 7-7/8 in (200 mm)



## STANLEY® BI-MATERIAL SLIP-JOINT PLIERS

- Two-position adjustable joint design used for grasping and turning.

Product #	Length	Number of Positions
84-055	6-3/4 in (171 mm)	2
84-026	8-3/8 in (212 mm)	2



## STANLEY® BI-MATERIAL DIAGONAL CUTTING PLIERS

- Fixed-joint design used for cutting.
- Individually sharpened blades cut soft and hard wire.

Product #	Length
84-027	6-1/4 in (159 mm)
84-028	7-3/16 in (183 mm)



## STANLEY® BI-MATERIAL LINEMAN CUTTING PLIERS

- Fixed-joint design used for grasping, bending and cutting.
- Individually sharpened blades cut soft and hard wire.

Product #	Length	Jaw Capacity
84-029	8-3/4 in (222 mm)	3/4 in (19 mm)



## STANLEY® BI-MATERIAL LONG NOSE CUTTING PLIERS

- Fixed-joint design used for bending, turning and cutting.
- Long nose design for use in hard-to-reach areas.

Product #	Length
84-031W	6-7/8 in (175 mm)
84-032	8-1/8 in (207 mm)





## 4 PIECE STANLEY® PLIERS AND ADJUSTABLE WRENCH SET

Product #: 84-558

- Pliers set designed for grasping, bending and cutting.

Contents	Description
84-055	(1) 6-5/8 in (168 mm) Slip-Joint Pliers
84-031W	(1) 6-7/8 in (175 mm) Long Nose Pliers
84-034	(1) 8 in (203 mm) Groove Joint Pliers
90-947	(1) 6-3/4 in (171 mm) Adjustable Wrench



## 4 PIECE STANLEY® BI-MATERIAL PLIERS SET

Product #: 84-058

- Pliers set designed for grasping, bending and cutting.

Contents	Description
84-026	(1) 8-1/4 in (210 mm) Slip-Joint Pliers
84-028	(1) 7 in (178 mm) Diagonal Pliers
84-032	(1) 8 in (203 mm) Long Nose Pliers
84-029	(1) 8-3/4 in (222 mm) Lineman Pliers



## 3 PIECE STANLEY® BI-MATERIAL PLIERS SET

Product #: 84-056

- Pliers set designed for grasping, bending and cutting.

Contents	Description
84-055	(1) 6-5/8 in (168 mm) Slip-Joint Pliers
84-031W	(1) 6-1/4 in (159 mm) Diagonal Pliers
84-027	(1) 7 in (178 mm) Long Nose Pliers



### FEATURES & BENEFITS – STANLEY® PLIERS

- Oil-resistant dipped handle allows for a comfortable grip.
- Drop-forged steel is strong and durable.
- Meets ANSI specifications.



### STANLEY® GROOVE JOINT PLIERS

- Slip-resistant tongue and groove design used for grasping and turning.



Product #	Length	Number of Positions	Jaw Capacity
84-109	8 in (203 mm)	6	1 in (25 mm)
84-110	10-1/4 in (260 mm)	7	2 in (51 mm)
84-111	12-5/8 in (322 mm)	8	2-1/16 in (52 mm)
84-020	16-1/4 in (412 mm)	9	3-7/10 in (94 mm)

## STANLEY® SLIP-JOINT PLIERS

- Adjustable joint design used for grasping and turning.



Product #	Length	Number of Positions	Jaw Capacity
84-097	6-3/4 in (171 mm)	2	1/2 in (13 mm)
84-098	8 in (203 mm)	2	1-3/4 in (44 mm)

## STANLEY® DIAGONAL CUTTING PLIERS

- Fixed-joint design used for cutting.
- Individually sharpened blades cut soft and hard wire.



Product #	Length	Jaw Capacity
84-104	5-3/4 in (146 mm)	1/3 in (8 mm)
84-105	6-3/16 in (157 mm)	1 in (25 mm)
84-108	7-5/16 in (186 mm)	7/8 in (22 mm)

## STANLEY® BASIC LINEMAN CUTTING PLIERS

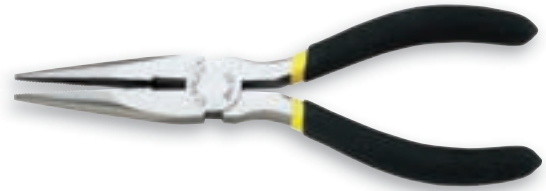
- Fixed-joint design used for grasping, bending and cutting.
- Individually sharpened blades cut soft and hard wire.



Product #	Length	Jaw Capacity
84-112	7-1/2 in (191 mm)	7/8 in (22 mm)
84-113	8-3/4 in (222 mm)	1-1/2 in (38 mm)

## STANLEY® LONG NOSE PLIERS

- Fixed-joint design used for bending, turning and cutting.
- Long nose design for use in hard-to-reach areas.



Product #	Length	Jaw Capacity
84-101	6-7/8 in (175 mm)	1-3/8 in (34 mm)
84-102	8 in (203 mm)	1-11/16 in (44 mm)

## STANLEY® MINI NEEDLE-NOSE PLIERS

- Fixed-joint design used for bending, turning and cutting.
- Long nose design for use in hard-to-reach areas.



Product #	Length
84-096	5-15/16 in (150 mm)



## 6 PIECE STANLEY® BASIC MINI PLIERS SET

Product #: 84-079

- Pliers set designed for grasping, bending and cutting.

Pieces	Description
6	(1) 4-1/4 in (108 mm) Diagonal Pliers (1) 4-1/8 in (104 mm) End Cutting Pliers (1) 4-7/8 in (123 mm) Bent Nose Pliers (1) 5 in (127 mm) Long Nose Pliers (1) 5-1/8 in (130 mm) Flat Nose Pliers (1) 5 in (127 mm) Groove Joint Pliers



## 3 PIECE STANLEY® BASIC PLIERS SET

Product #: 84-114

- Pliers set designed for grasping, bending and cutting.

Contents	Description
84-097	(1) 6-3/4 in (171 mm) Slip-Joint Pliers
84-105	(1) 6 in (152 mm) Diagonal Pliers
84-101	(1) 6-3/4 in (171 mm) Long Nose Plier



## 2 PIECE STANLEY® BASIC PLIERS SET

Product #: 84-212

- Pliers set designed for grasping, bending and cutting.

Pieces	Description
2	(1) 6-1/4 in (159 mm) Slip-Joint Pliers (1) 6 in (152 mm) Long Nose Pliers



### FEATURES & BENEFITS – STANLEY® LOCKING PLIERS

- Forged steel is strong and durable.
- Meets ANSI specifications.



## STANLEY® CURVED JAW LOCKING PLIERS

- Curved jaws designed for tightening, clamping and turning round objects such as piping or nuts.
- Induction hardened jaws last longer and grip better than non-induction hardened jaws.
- Adjustment screw provides the ideal holding pressure.
- Built-in wire cutter.



Product #	Length	Jaw Length	Jaw Capacity	Jaw Adjustment
84-807	5-3/8 in (138 mm)	7/8 in (22 mm)	1-9/16 in (40 mm)	0 – 7/8 in (0 - 22 mm)
84-808	7 in (180 mm)	1-3/64 in (27 mm)	1-1/4 in (32 mm)	0 – 1-1/4 in (0 - 32 mm)
84-809	9 in (229 mm)	1-11/64 in (30 mm)	1-3/4 in (44 mm)	0 – 1-3/4 in (0 - 44 mm)



## STANLEY® STRAIGHT JAW LOCKING PLIERS

- Straight jaws ideal for tightening, clamping, twisting and turning flat objects such as sheet metal.
- Induction hardened jaws last longer and grip better than non-induction hardened jaws.
- Adjustment screw provides the ideal holding pressure.
- Built-in wire cutter.



Product #	Length	Jaw Length	Jaw Capacity	Jaw Adjustment
84-810	7-1/2 in (191 mm)	1-1/32 in (26 mm)	1-1/3 in (33 mm)	0 – 7/8 in (0 - 22 mm)
84-811	9 in (229 mm)	1-1/8 in (29 mm)	1-3/4 in (44 mm)	0 – 1-3/4 in (0 - 44 mm)

## STANLEY® LONG NOSE LOCKING PLIERS

- Long nose jaws reach into tight spaces; ideal for tightening, clamping, twisting and turning flat objects such as sheet metal.
- Induction hardened jaws last longer and grip better than non-induction hardened jaws.
- Adjustment screw provides the ideal holding pressure.
- Built-in wire cutter.



Product #	Length	Jaw Length	Jaw Capacity	Jaw Adjustment
84-812	6-3/8 in (162 mm)	1-47/64 in (44 mm)	1-3/4 in (44 mm)	0 – 2 in (0 – 51 mm)
84-813	8-1/2 in (216 mm)	2-1/8 in (54 mm)	2-3/4 in (70 mm)	0 – 2 in (0 – 51 mm)

## STANLEY® C-CLAMP LOCKING PLIERS

- Wide opening jaws with swivel pads provides greater versatility in clamping a variety of shapes and sizes.
- Swivel pad jaws help distribute clamping pressure.
- Turn screw adjustment.



Product #	Length	Jaw Capacity
84-816	12 in (305 mm)	2-7/8 in (70 mm)

## 3 PIECE STANLEY® LOCKING PLIERS SET

Product #: 94-960



Contents	Description	Jaw Capacity
84-811	(1) 9 in (225 mm) Straight Jaw Locking Pliers	1-5/8 in (40 mm)
84-808	(1) 7-3/8 in (185 mm) Curved Jaw Locking Pliers	1-1/4 in (32 mm)
84-812	(1) 6-3/4 in (171 mm) Long Nose Locking Pliers	2 in (51 mm)