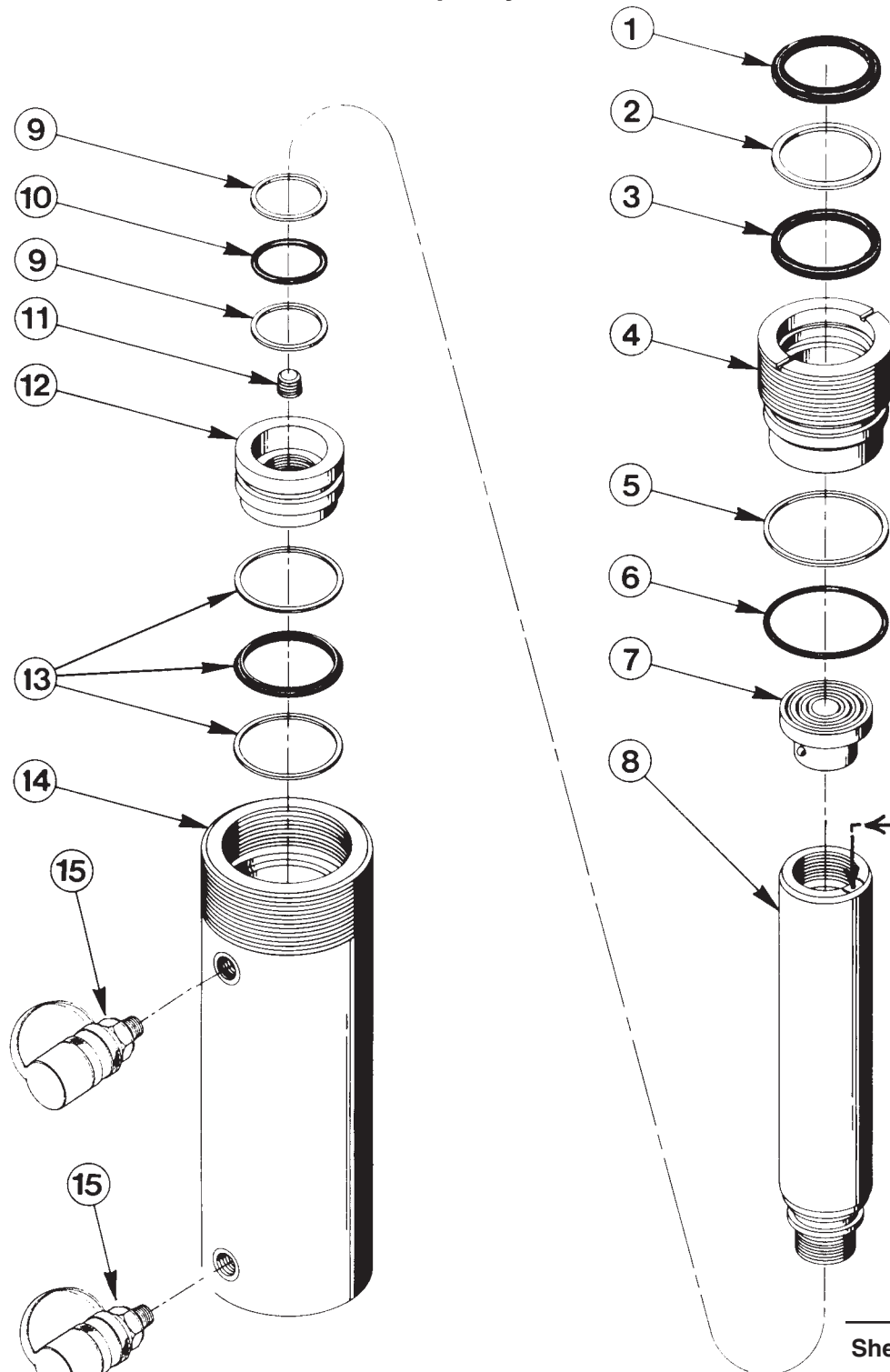


Parts List for:

7RD256  
RD256  
RD2514  
RD256-PFAFF

**DOUBLE-ACTING  
HYDRAULIC CYLINDER**  
Max. Capacity: 25.8 Tons at 10,000 PSI



Double-acting  
Cylinder  
Relief Valve

See important  
**! DANGER**  
statement  
on back of  
sheet 1 of 1

 **DANGER:** To help avoid possible serious personal injury or death,

- In the event that the cylinder retract port is ever restricted or plugged, a double-acting cylinder relief valve will help prevent excessive pressure from building in the cylinder. **DO NOT** attempt to adjust or service this relief valve! If oil leakage is detected from this relief valve, discontinue use of the cylinder immediately and contact Power Team Technical Services. Only Power Team Authorized Hydraulic Service Centers should service this relief valve.

Item No.	Part No.	No. Req'd	Description
1	*207720	1	Rod Wiper
2	*19587	1	Backup Washer
3	*19570	1	U-cup
4	43391	1	Retainer Nut (Torque to 100 ft. lbs.)
5	*19717	1	Backup Washer
6	*10936	1	O-ring (2-7/8 x 2-5/8 x 1/8)
7	201412	1	Thread Adapter Assembly
8	51395	1	Piston Rod (For RD256, 7RD256 & RD256-PFAFF)
	51388	1	Piston Rod (For RD2514)
9	*19144	2	Backup Washer
10	*10282	1	O-ring (1-3/4 x 1-1/2 x 1/8)
11	14972	1	Pressure Plug (1/4 NPTF; Prior to 5-1-91)
	16232	1	Pressure Plug (3/8 NPTF; After 5-1-91)
12	43390	1	Piston Head (Torque to 200 ft. lbs.)
13	*19759	1	T-Seal & Backup Rings (Smooth side of Backup Ring must be against seal.)
14	51397	1	Cylinder Body (For RD256, 7RD256 & RD256-PFAFF)
	51389	1	Cylinder Body (For RD2514)
15	9796	2	Quick Coupler (For RD256, RD2514 & RD256-PFAFF)
	210916	2	Quick Coupler (For 7RD256)

**PARTS INCLUDED BUT NOT SHOWN**

*203908	1	Warning Decal
420894	1	Full Coverage Decal (For RD256)
420895	1	Full Coverage Decal (For RD2514)
210851	1	Trade Name Decal (For 7RD256)
421277	1	Thread Protector (For RD256 & RD2514 & RD256-PFAFF)
203908-CE	1	Warning Decal (For RD256-PFAFF)
252184	1	Trade Name Decal (For RD256-PFAFF)

Part numbers marked with an (\*) asterisk are contained in Repair Kit No. 300018.

Refer to any operating instructions included with this product for detailed information about operation, testing, disassembly, reassembly, and preventive maintenance.

Items found in this parts list have been carefully tested and selected. **Therefore: Use only genuine Power Team replacement parts!**

Additional questions can be directed to our Technical Services Department.