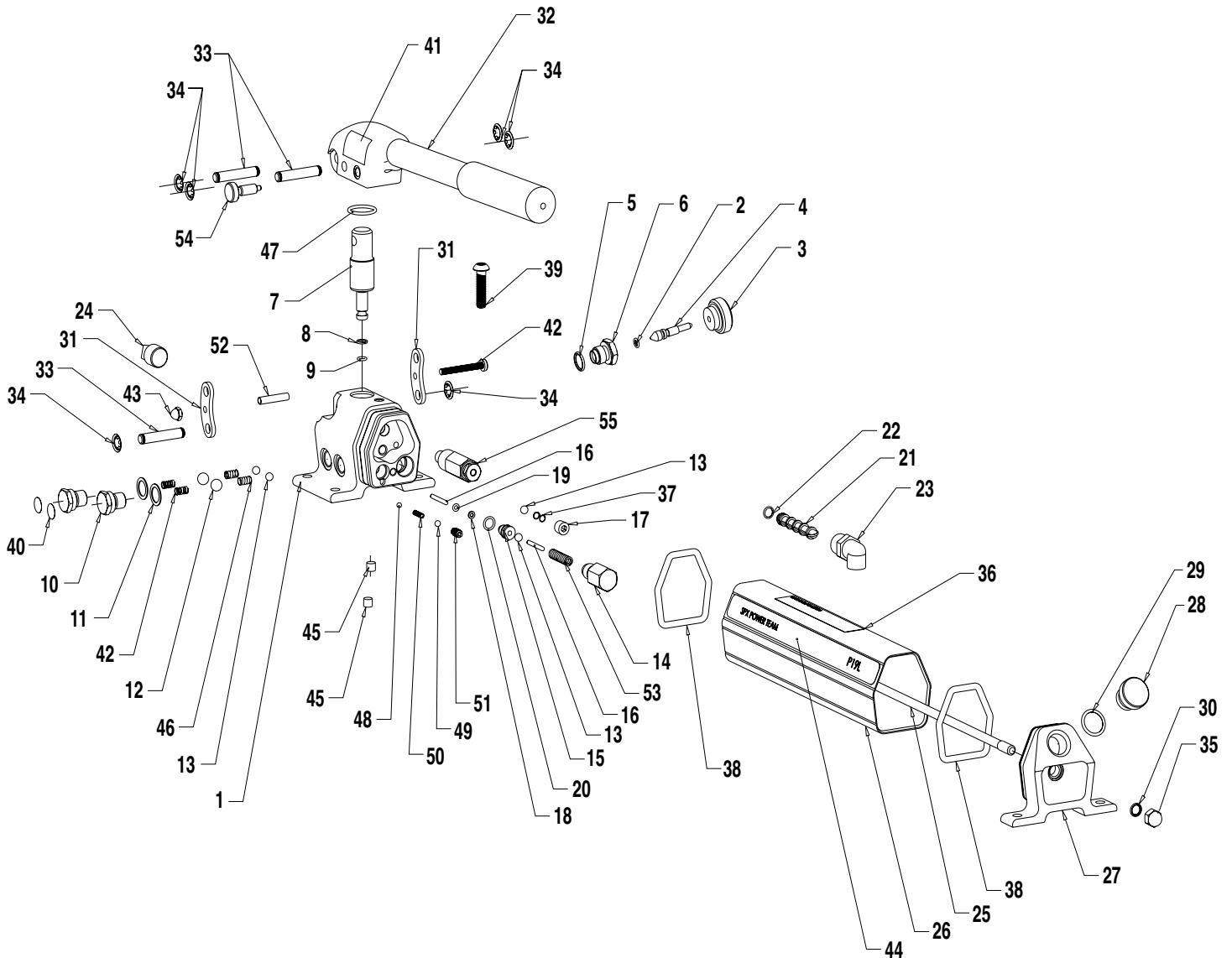




## TWO-STAGE HYDRAULIC HAND PUMP



Item No.	Part No.	No. Req'd	Description	Item No.	Part No.	No. Req'd	Description
1	2000360	1	Pump Body	30	*15279	1	O-Ring (-12)
2	*10265	1	O-Ring (-008) Nitrile .31 x .18	31	2000366	2	Link
3	2000577	1	Knob	32	3000169	1	Handle Assembly
4	2000465	1	Stem	33	2000365	3	Pin, Pivot
5	*10300	1	O-Ring (-906) Nitrile .62 x .46	34	*2000364	6	Ring, Retaining
6	2000466	1	Guide	35	251903	1	Nut, Hex Cap (5/16-18)
7	2000361	1	Piston, 2-Speed	36	1000135	1	Decal, Warning
8	*12184	1	Washer, Backup .38 x .25	37	*10444	3	Spring, (.25 OD x .41 x .02 WS)
9	*12522	1	O-Ring (-10) Urethane .37 x .25	38	*10285	2	O-Ring (-329) Nitrile 70D 2.375 x 2.00
10	2000373	2	Screw, Valve Zinc Plated (351952)	39	2000358	1	Screw 5/16-18 BHCS 1.25" Lg
11	*14874	2	Washer, Copper .70 x 50	40	*215907	2	Decal, Warning
12	*10378	2	Ball (3/8" Dia. Steel)	41	1000143	1	Decal, Locking
13	*10375	4	Ball (1/4" Dia. Steel)	42	2000392	1	Screw (10-32 x 1 5/8")
14	2000321	1	Housing, Unloading Valve	43	252871	1	Nut, Acorn (10-32)
15	*2000322	1	Bushing, Unloading Valve	44	1000139	1	Decal, Tradename Power Team
16	*16471	2	Pin, Dowel (.13 x 1.00)	45	15130	2	Fitting, Plug (1/16 PTF)
17	10427	1	Fitting	46	14070	2	Spring, Compression
18	*214992	1	Washer, Backup .24 x .13	47	*2000516	1	O-Ring (-117) 0.799ID x 0.103 Urethan 90
19	*10264	1	O-Ring (-006) Nitrile .25 x .12	48	*10419	1	Ball (.156" Dia)
20	*10267	1	O-Ring (-011) Nitrile .43 x .31	49	*12223	1	Ball (.188" Dia)
21	*215075	1	Screen, Filter	50	*10445	1	Spring
22	*12557	1	O-Ring (-009) Nitrile .34 x .21	51	10519	1	Screw, Set (.250- 20 x .38)
23	2000356	1	Elbow 3/8 NPTF	52	2000402	1	Tubing
24	11127	1	Fitting, Plug (3/8 NPTF)	53	*2000330	1	Spring, Unloading Valve
25	2000362	1	Rod, Tie 5/16- 18 UNC x 11.10"	54	2000327	1	Plunger, Retractable (Included in 3000169, Handle Assembly)
26	2000353-1	1	Reservoir 2.275 x 2.55 x 10.25	55	21278	1	Valve, Relief 10,000 psi (for P19L)
27	2000406	1	Cap, End P19L Machined casting		21278-10	1	Valve, Relief (Adjustable to 1,320 psi for P19L-1320)
28	351245	1	Cap, Filler		21278-17	1	Valve, Relief 1,740 psi (for P19L-1740)
29	*10274	1	O-Ring (-115) Nitrile .87 x .68		21278-20	1	Valve, Relief 2,000 psi (for P19L-2000)
					21278-43	1	Valve Relief 4,600 psi (P19L-4600)
					21278-50	1	Valve, Relief 5,000 psi (P19L-5100)

Part numbers marked with an asterisk (\*) are contained in Standard Repair Kit No. 3000179.

Refer to any operating instructions included with the product for detailed information about operation, testing, disassembly, reassembly, and preventive maintenance.

Items found in this parts list have been carefully tested and selected. **Therefore: Use only genuine Power Team replacement parts!**

Additional questions can be directed to our Technical Services Department.