

**Scotch-Brite™**

**THE LATEST  
ADVANCES IN  
ALUMINUM  
SOLUTIONS**

**CUBITRON™ II**

# **Scotch-Brite™** **COMPLETE** **ALUMINUM SOLUTIONS**

Scotch-Brite sets the standard for non-woven industrial abrasives. It's *the original*—invented by 3M and proudly made in the USA. The performance of Scotch-Brite innovations is reflected in the aluminum finishes of countless craftsmen and metal professionals across the globe. As 3M continues to innovate, you'll always have the most advanced abrasive technologies right in your hands.

Introducing the latest aluminum solutions from 3M. With a complete selection of abrasive products and tools, you'll have the most advanced equipment to make a professional finish on aluminum and other soft metals each and every time.

- **New Scotch-Brite™ AL Surface Conditioning Discs**
- **New Scotch-Brite™ Deburr and Finish PRO Unitized Wheels**
- **New 3M™ Cubitron™ II Roloc™ Durable Edge Disc 947A**
- **The latest 3M™ Disc Sanders and Die Grinders**




# NEW SCOTCH-BRITE™ AL SURFACE CONDITIONING DISCS

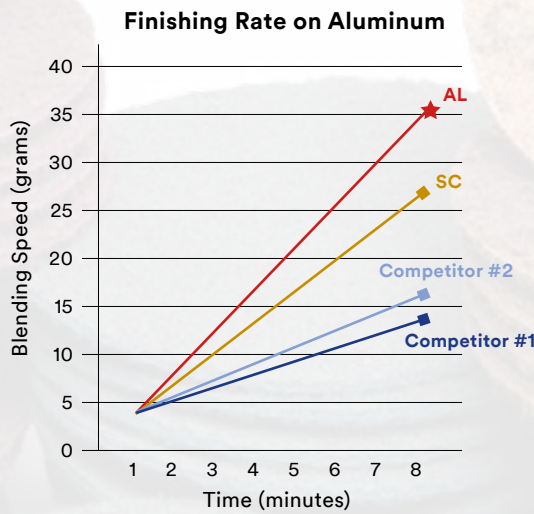


Combining the most advanced blending and finishing capabilities, these non-woven surface conditioning discs give you a finish that can meet the highest standards of quality control. The unique, open web construction resists loading, providing up to twice the service life giving an easy-to-handle blend on aluminum, oily carbon and other soft metal surfaces.

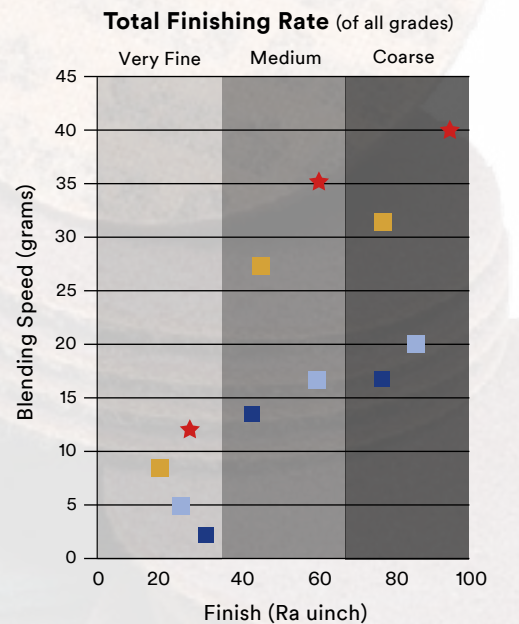


Features	Applications
Scotch-Brite™ non-woven construction	Aluminum and other soft metal finishing
Benefits	Grade*
<ul style="list-style-type: none"> <li>• Same great performance you know and trust</li> <li>• Loading resistant</li> <li>• Longer life</li> <li>• Faster blending and finishing</li> <li>• Better edge retention</li> </ul>	<ul style="list-style-type: none"> <li>• Very Fine</li> <li>• Medium</li> <li>• Coarse</li> </ul>  <p><i>*Roloc™ and Hook-and-Loop</i></p>

## Performance Graphs



Scotch-Brite™ discs outperform the competition in both the rate of blend and consistency of finish. The graph above shows how they blend material faster to increase productivity. The graph at right shows how they maintain a consistent finish while achieving this higher blend rate. Overall, this means Scotch-Brite discs can reduce your finishing time without sacrificing your finish quality. So when you factor in their longer life, you've got everything needed to lower finishing costs.



★ AL    ■ SC    ■ Competitor #2    ■ Competitor #1

AL= New Scotch-Brite™ AL Surface Conditioning Disc  
SC=Scotch-Brite™ SC Surface Conditioning Disc

# NEW SCOTCH-BRITE™ DEBURR AND FINISH PRO UNITIZED WHEELS



Built for productivity, no other non-woven unitized wheels are as effective for deburring and finishing. They let you blast through aluminum imperfections with less loading—so you'll get a smooth finish over and over again.

## Features

- Scotch-Brite™ non-woven construction
- 3M Precision-Shaped Ceramic Grain Technology



## Benefits

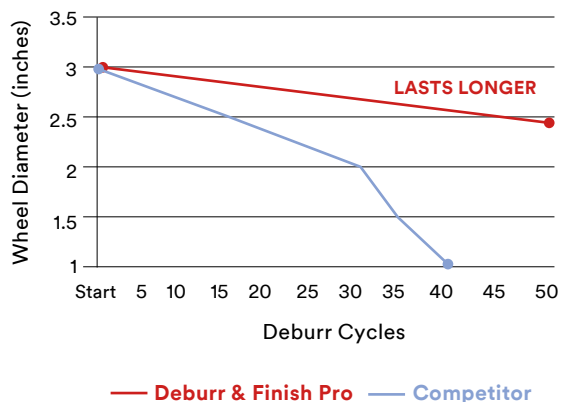
- Loading resistant
- Up to 3X longer life (see graph left)
- 30-50% faster burr removal (see graph right)
- Consistent finishes
- Smooth running feel

## Applications

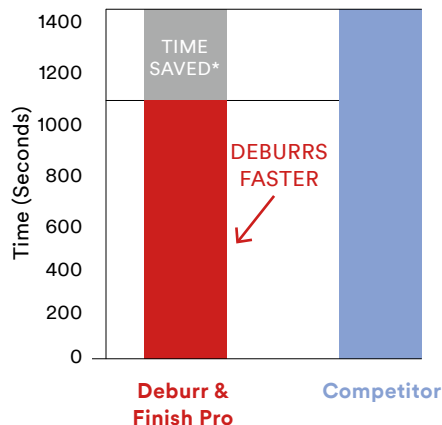
- Deburring
- Finishing
- Blending

## Performance Graphs

**Wheel Wear**



**Cumulative Time to Deburr  
39 Total Cycles**



\*Time saved=300 seconds (5 minutes)



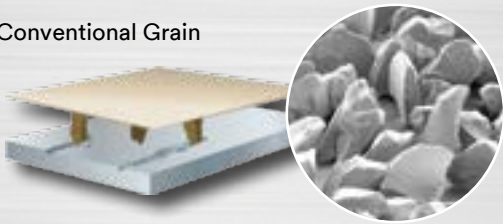


# NEW 3M™ CUBITRON™ II ROLOC™ DURABLE EDGE DISC 947A

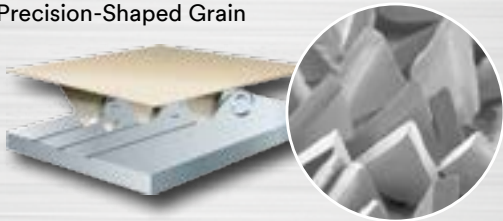
Designed for speed and durability, these quick-change discs come in a range of sizes and grades to give you a faster, more consistent cut each and every time.

Both the Scotch-Brite™ Deburr and Finish PRO Unitized Wheels and the 3M™ Cubitron™ II RoLoc™ Durable Edge Disc 947A feature **3M Precision-Shaped Ceramic Grain**. This revolutionary technology features triangular shaped ceramic minerals. As those minerals wear during use, they fracture at angles that continually form sharp points. This allows the minerals to keep slicing through the substrate with ease, while helping the grain wear more evenly. No other industrial abrasive delivers the same kind of performance, feel or finish.

Conventional Grain



Precision-Shaped Grain

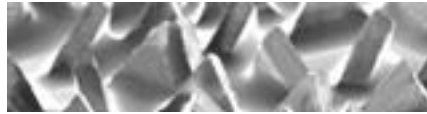


3M Precision-Shaped Ceramic Grain cuts faster, lasts longer, and produces a more consistent finish.

† In comparison to conventional grain

## Features

- 3M Precision-Shaped Ceramic Grain Technology



## Applications

- Deburring
- Blending
- Cleaning
- Finishing

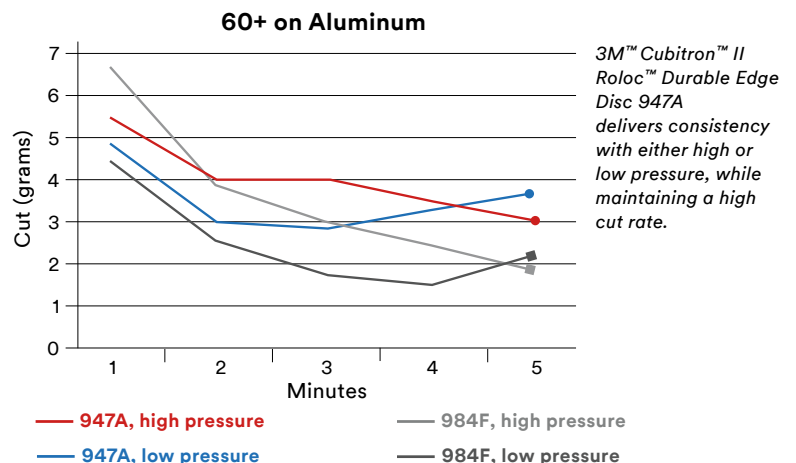
## Benefits†

- Loading resistant
- Longer lasting
- Faster cutting
- Quick-change capability

## Grit

- 40+
- 60+
- 80+
- 120+

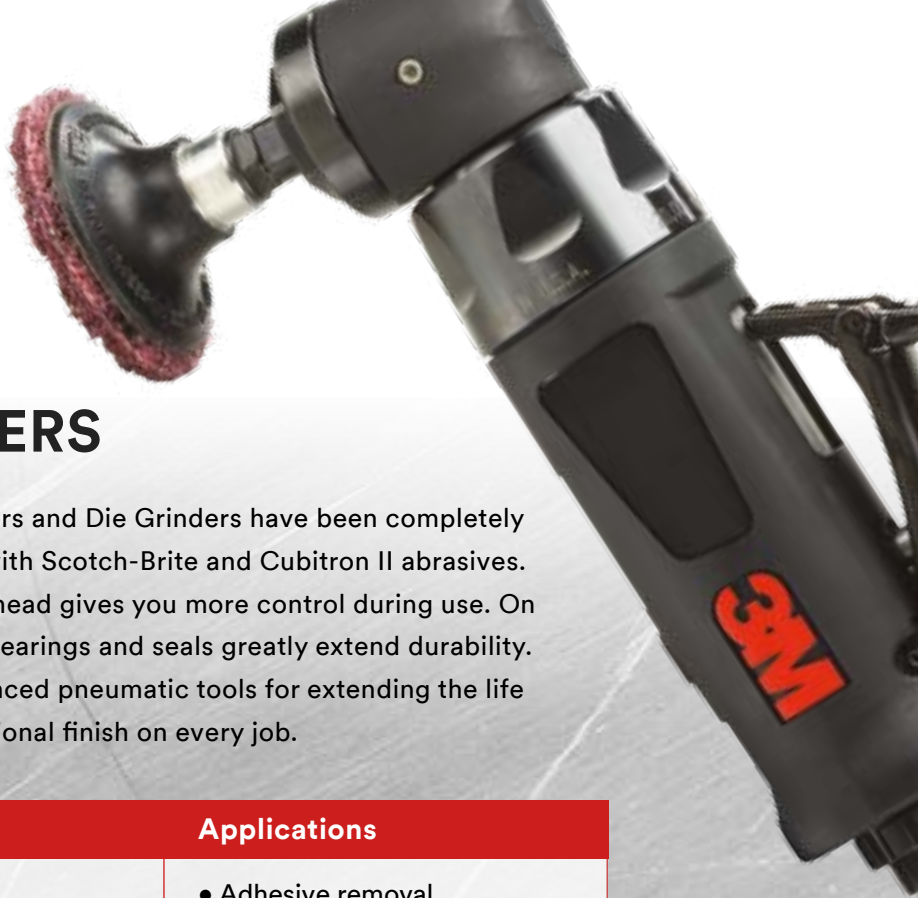
## Performance Graphs



# 3M™ DISC SANDERS AND DIE GRINDERS

The latest pneumatic 3M Disc Sanders and Die Grinders have been completely re-engineered to work even better with Scotch-Brite and Cubitron II abrasives. On the outside, a stronger, all-steel head gives you more control during use. On the inside, larger gear sets, spindle bearings and seals greatly extend durability. Simply put, these are the most advanced pneumatic tools for extending the life of abrasives and achieving a professional finish on every job.

Features	Applications
<ul style="list-style-type: none"><li>• Heavy-duty head design</li><li>• Larger gear sets, spindle bearings and seals</li><li>• Ergonomic safety lever and jacket</li><li>• Kevlar reinforced vanes</li><li>• CE Certified</li></ul>	<ul style="list-style-type: none"><li>• Adhesive removal</li><li>• Coating removal</li><li>• Contour finishing</li><li>• Deburring edges</li><li>• Defect repair/leveling</li><li>• Edge beveling/chamfering</li><li>• Paint stripping</li><li>• Prepping metal prior to paint</li><li>• Radiusing</li><li>• Right angle</li><li>• Sealant removal</li></ul>
Benefits	
<ul style="list-style-type: none"><li>• Intuitive grip</li><li>• Greater wrist comfort</li><li>• Increased durability</li><li>• Minimal vibration</li><li>• Quieter operation</li></ul>	
Power	
<ul style="list-style-type: none"><li>• 0.3 hp</li><li>• 0.5 hp</li></ul>	



# SCOTCH-BRITE™ AL SURFACE CONDITIONING DISCS

Scotch-Brite™ AL Surface Conditioning Discs

UPC	SIZE	GRADE	DISCS	MAX RPM
051141-54197-6	1-1/2"xNH	A CRS	200/cs	25000
051141-54198-3	2"xNH	A CRS	50/200	23000
051141-54199-0	3"xNH	A CRS	25/100	18000
051141-54209-6	4"xNH	A CRS	100/cs	10000*
051141-54219-5	4-1/2"xNH	A CRS	50/cs	9600*
051141-54224-9	4-1/2"x7/8"	A CRS	50/cs	9600*
051141-54212-6	5"xNH	A CRS	50/cs	8500*
051141-54210-2	5"x7/8"	A CRS	50/cs	8500*
051141-54204-1	7"xNH	A CRS	25/cs	6000
051141-54222-5	7"x7/8"	A CRS	25/cs	6000
051141-54200-3	1-1/2"xNH	A MED	200/cs	25000
051141-54201-0	2"xNH	A MED	200/cs	23000
051141-54202-7	3"xNH	A MED	100/cs	18000
051141-54203-4	4"xNH	A MED	25/100	10000
051141-54218-8	4-1/2"xNH	A MED	50/cs	9600
051141-54223-2	4-1/2"x7/8"	A MED	50/cs	9600
051141-54215-7	5"xNH	A MED	50/cs	8500
051141-54216-4	5"x7/8"	A MED	50/cs	8500
051141-54211-9	7"xNH	A MED	25/cs	6000
076308-77141-6	7"x7/8"	A MED	25/cs	6000
051141-54205-8	1-1/2"xNH	A VFN	200/cs	25000
051141-54206-5	2"xNH	A VFN	200/cs	23000
051141-54207-2	3"xNH	A VFN	100/cs	18000
051141-54208-9	4"xNH	A VFN	100/cs	10000
051141-54217-1	4-1/2"xNH	A VFN	50/cs	9600
076308-77133-1	4-1/2"x7/8"	A VFN	50/cs	9600
051141-54213-3	5"xNH	A VFN	50/cs	8500
051141-54220-1	5"x7/8"	A VFN	50/cs	8500
051141-54214-0	7"xNH	A VFN	25/cs	6000
051141-54221-8	7"x7/8"	A VFN	25/cs	6000

Scotch-Brite™ Roloc™ AL Surface Conditioning Discs TR

UPC	SIZE	GRADE	DISCS	MAX RPM
051141-54141-9	3/4"xNH	A CRS	200/cs	30000
051141-54125-9	1"xNH	A CRS	200/cs	30000
051141-54108-2	1-1/2"xNH	A CRS	200/cs	30000
051141-54137-2	2"xNH	A CRS	50/200	25000
051141-54140-2	3"xNH	A CRS	25/100	18000
051141-54113-6	4"xNH	A CRS	25/100	12000
051141-54124-2	1"xNH	A MED	200/cs	30000
051141-54109-9	1-1/2"xNH	A MED	200/cs	30000
051141-54136-5	2"xNH	A MED	50/200	25000
051141-54139-6	3"xNH	A MED	25/100	18000
051141-54112-9	4"xNH	A MED	25/100	12000
051141-54123-5	1"xNH	A VFN	200/cs	30000
051141-54110-5	1-1/2"xNH	A VFN	200/cs	30000
051141-54135-8	2"xNH	A VFN	50/200	25000
051141-54138-9	3"xNH	A VFN	25/100	18000
051141-54111-2	4"xNH	A VFN	25/100	12000

Scotch-Brite™ Roloc™ AL Surface Conditioning Discs TS

UPC	SIZE	GRADE	DISCS	MAX RPM
051141-54114-3	2"xNH	A CRS	50/200	25000
051141-54117-4	3"xNH	A CRS	25/100	18000
051141-54120-4	4"xNH	A CRS	25/100	12000
051141-54115-0	2"xNH	A MED	50/200	25000
051141-54118-1	3"xNH	A MED	25/100	18000
051141-54121-1	4"xNH	A MED	25/100	12000
051141-54116-7	2"xNH	A VFN	50/200	25000
051141-54119-8	3"xNH	A VFN	25/100	18000
051141-54122-8	4"xNH	A VFN	25/100	12000

Scotch-Brite™ Roloc™ AL Surface Conditioning Discs TSM

UPC	SIZE	GRADE	DISCS	MAX RPM
051141-54149-5	1-1/2"xNH	A CRS	200/cs	30000
051141-54143-3	2"xNH	A CRS	50/200	25000
051141-54145-7	3"xNH	A CRS	25/100	18000
051141-54148-8	1-1/2"xNH	A MED	200/cs	30000
051141-54142-6	2"xNH	A MED	50/200	30000
051141-54144-0	3"xNH	A MED	25/100	18000
051141-54147-1	1-1/2"xNH	A VFN	200/cs	30000
051141-54146-4	2"xNH	A VFN	50/200	25000
051141-54150-1	3"xNH	A VFN	25/100	18000

Scotch-Brite™ AL Surface Conditioning Discs TN Quick Change

UPC	SIZE	GRADE	DISCS	MAX RPM
076308-64361-4	4-1/2x5/8-11	A CRS	50/cs	12000
076308-64360-7	5x5/8-11	A CRS	50/cs	9500
076308-64362-1	7x5/8-11	A CRS	25/cs	7000
076308-64363-8	4-1/2x5/8-11	A MED	50/cs	12000
076308-64359-1	5x5/8-11	A MED	50/cs	9500
076308-64364-5	7x5/8-11	A MED	25/cs	7000
076308-64365-2	4-1/2x 5/8-11	A VFN	50/cs	12000
076308-64358-4	5x5/8-11	A VFN	50/cs	9500
076308-64366-9	7x5/8-11	A VFN	25/cs	7000

## 3M™ DISC SANDERS

Disc Sanders

MODEL NO.	UPC	DIAMETER	RPM	MOTOR	CASE QTY
28341*	051141-28341-8	2 in	20,000	.3 HP	1
28328*	051141-28328-9	2 in	12,000	.3 HP	1
20231*	051141-20231-0	2 in	20,000	.5 HP	1
28329*	051141-28329-6	2 in	12,000	.5 HP	1

\*available in metric collet

\* 4" max RPM 13,000 when using 3M Back Up Pad 924. 4.5" max RPM 12,000 when using 3M Back Up Pad 9145FD<sup>1</sup>. 5" max RPM 10,000 when using 3M Back Up Pad 915FD<sup>1</sup>.

<sup>1</sup> CPS is Contract Production Services, Inc. Minneapolis, MN 55403 supplied.

# 3M™ DIE GRINDERS

Die Grinders						
MODEL NO.	UPC	COLLET SIZE	RPM	MOTOR	CASE QTY	EXT
28627	051141-28627-3	1/4 in	18,000	.3 HP	1	N/A
28628	051141-28628-0	1/4 in	18,000	.3 HP	1	3" EXT
28629	051141-28629-7	1/4 in	25,000	.3 HP	1	N/A
28630	051141-28630-3	1/4 in	25,000	.3 HP	1	3" EXT
28330*	051141-28330-2	1/4 in	18,000	.5 HP	1	N/A
28331*	051141-28331-9	1/4 in	18,000	.5 HP	1	3" EXT
28332*	051141-28332-6	1/4 in	4,000	.5 HP	1	N/A

\*available in metric collet

# 3M™ CUBITRON™ II ROLOC™ DURABLE EDGE DISC 947A

Roloc™ Durable Edge Disc TR 947A				
UPC	SIZE	GRADE	DISCS	MAX RPM
051141-54239-3	1-1/2 in	40+	50/200	30000
051141-54240-9	2 in	40+	50/200	25000
051141-54241-6	3 in	40+	50/200	20000
051141-54242-3	4 in	40+	25/100	12000
051141-54247-8	1-1/2 in	60+	50/200	30000
051141-54248-5	2 in	60+	50/200	25000
051141-54249-2	3 in	60+	50/200	20000
051141-54250-8	4 in	60+	25/100	12000
051141-54255-3	1-1/2 in	80+	50/200	30000
051141-54256-0	2 in	80+	50/200	25000
051141-54257-7	3 in	80+	50/200	20000
051141-54258-4	4 in	80+	25/100	12000
051141-54263-8	1-1/2 in	120+	50/200	30000
051141-54264-5	2 in	120+	50/200	25000
051141-54265-2	3 in	120+	50/200	20000
051141-54266-9	4 in	120+	25/100	12000

Roloc™ Durable Edge Disc TSM 947A				
UPC	SIZE	GRADE	DISCS	MAX RPM
051141-54243-0	1-1/2 in	40+	50/200	30000
051141-54244-7	2 in	40+	50/200	25000
051141-54245-4	3 in	40+	50/200	20000
051141-54246-1	4 in	40+	25/100	12000
051141-54251-5	1-1/2 in	60+	50/200	30000
051141-54252-2	2 in	60+	50/200	25000
051141-54253-9	3 in	60+	50/200	20000
051141-54254-6	4 in	60+	25/100	12000
051141-54259-1	1-1/2 in	80+	50/200	30000
051141-54260-7	2 in	80+	50/200	25000
051141-54261-4	3 in	80+	50/200	20000
051141-54262-1	4 in	80+	25/100	12000
051141-54267-6	1-1/2 in	120+	50/200	30000
051141-54268-3	2 in	120+	50/200	25000
051141-54269-0	3 in	120+	50/200	20000
051141-54270-6	4 in	120+	25/100	12000

# 3M™ DEBURR AND FINISH PRO UNITIZED WHEELS

Deburr and Finish PRO TR Unitized Wheels				
UPC	SIZE	DENSITY/ GRADE	DISCS	MAX RPM
076308-77115-7	2x1/4xNH	4C MED+	60/cs	22100
076308-77116-4	3x1/4xNH	4C MED+	40/cs	15100
048011-65082-1	2x1/4xNH	6C MED+	60/cs	22100
048011-65083-8	3x1/4xNH	6C MED+	40/cs	15100

**Warranty and Limited Remedy:** 3M warrants that each 3M product meets the applicable 3M product specification at the time 3M ships the product. 3M MAKES NO OTHER EXPRESS OR IMPLIED WARRANTIES OR CONDITIONS, INCLUDING ANY IMPLIED WARRANTY OR CONDITION OF MERCHANTABILITY OR FITNESS FOR A PARTICULAR PURPOSE. If the 3M product does not conform to this warranty, the sole and exclusive remedy is, at 3M's option, replacement of the 3M product or refund of the purchase price.

**Limitation of Liability:** Except where prohibited by law, 3M will not be liable for any loss or damage arising from the 3M product, whether direct, indirect, special incidental or consequential, regardless of the legal theory asserted.



**Abrasive Systems Division**  
 3M Center  
 Building 223-6S-03  
 St. Paul, MN 55144-1000

1-866-279-1235  
[www.3M.com/Abrasives](http://www.3M.com/Abrasives)

3M, Cubitron, Roloc and Scotch-Brite are trademarks of 3M Company. Used under license in Canada.

Please recycle. Printed in U.S.A.  
 © 3M 2015. All rights reserved.  
 61-5002-8398-3